

SPECIFICATIONS FOR CLARIFIERS

- 1 Toilet facilities are prohibited from flowing through the clarifier
- 2 Standard - 3-unit, 5700ℓ (1500 gallon) with 450mm X 600mm (18" x 2') sample box
- 3 All are minimum 3-unit plus sample box unless otherwise specified.

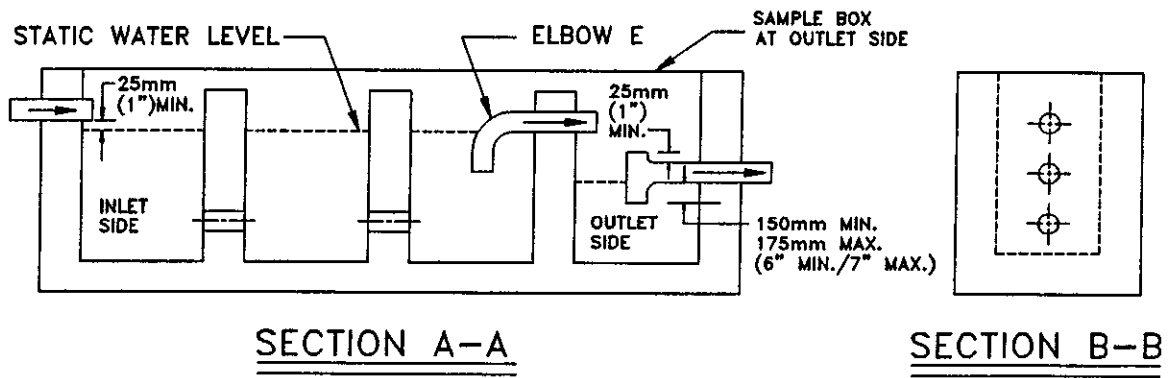
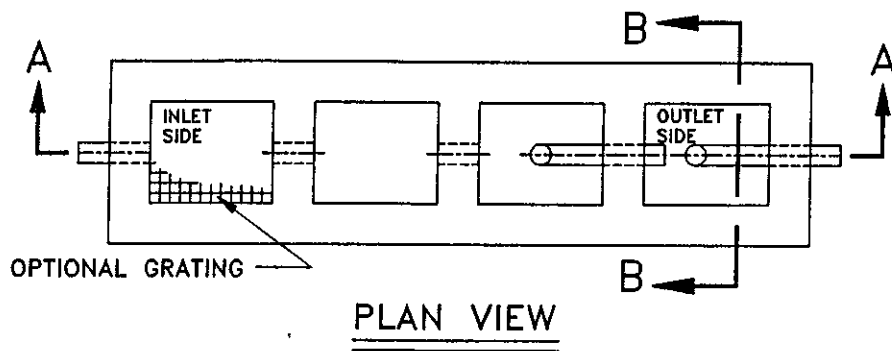
TYPE OPERATION	EQUIPMENT	SIZE	LOCATION	DRAINS TO CLARIFIER
Service Station	2 or 3 bay, lube equipment	5700ℓ (1500 gallons)	Outside	Lube area, wash rack and storage area
Service Station	Same as above, w/steam cleaner	5700ℓ (1500 gallons)	"	Same as above, drains from steam clean area
Garages.				
(1) General	w/steam cleaning facilities	5700ℓ (1500 gallons)	"	All drains from work area
	w/o steam cleaning facilities	5700ℓ (1500 gallons)	"	Same as above
(2) Transmission	w/steam cleaning facilities	5700ℓ (1500 gallons)	"	"
	w/o steam cleaning facilities	5700ℓ (1500 gallons)	"	"
(3) Body Shop	w/drains from work area	5700ℓ (1500 gallons)	"	"
	w/o drains from work area	NONE	"	"
(4) Paint Shop	Spray booth w/drains and/or water wash vent	5700ℓ (1500 gallons)	"	All drains from work and water wash vent
Steam Cleaners	1 or more cleaning booth	5700ℓ (1500 gallons) w/ 9m x .9m x .9m (3' x 3' x 3') primary	"	All drains from work area
	Fully automatic	2-5700ℓ (1500 gallons) 11400ℓ (3000 gallons) total	Optional	Same as above
Car Wash (Automatic)	To 4 bays w/o steam cleaner	5700ℓ (1500 gallons)	"	Same as above
	To 4 bays w/steam cleaner & 5 bays & above w/o steam cleaner	5700ℓ (1500 gallons)	"	Same as above
Car Wash (Self-service)	5 bays w/steam cleaner	2-5700ℓ (1500 gallons) 11400ℓ (3000 gallons total)	"	Same as above

STANDARD CLARIFIER SPECIFICATIONS

FIG. SS-19

REV 7/99

SS-19



SECTION A-A SECTION B-B
TYPICAL CLARIFIER DETAIL

NOTES

1. Secure necessary permits from the Building Department and/or the Sanitation District and check location and structural requirements before beginning installation of clarifiers.
2. Size and details of clarifiers shall be approved by the District Engineer. Refer to Figure SS-19.
3. Clarifier or forming for clarifier shall be installed prior to the time of the rough plumbing inspection. Call 454-2160 for inspection of clarifier 24 hours prior to installation or concrete pour.
4. Inlet box shall be covered with a removable iron plate or grill as specified. The other compartments and the sample box shall be covered with a removable, tight fitting, solid metal plate.
5. Waterways of compartments can be made using a 75mm (3") by 100mm (4") slot or by installing pipe fittings of equal diameter to that of the outlet pipe. Keep waterways below bottom of "Elbow E."
6. Allow no surface, storm or rain water to enter the clarifier at any time.
7. Clarifier may be constructed in two separate parts providing that waste flows through all boxes.
8. Outlet from clarifier shall be properly vented per U.P.C. standards.
9. All lines shown shall be 100mm (4") minimum.

**STANDARD CLARIFIER
 FIG. SS-20**

REV. 9-98