

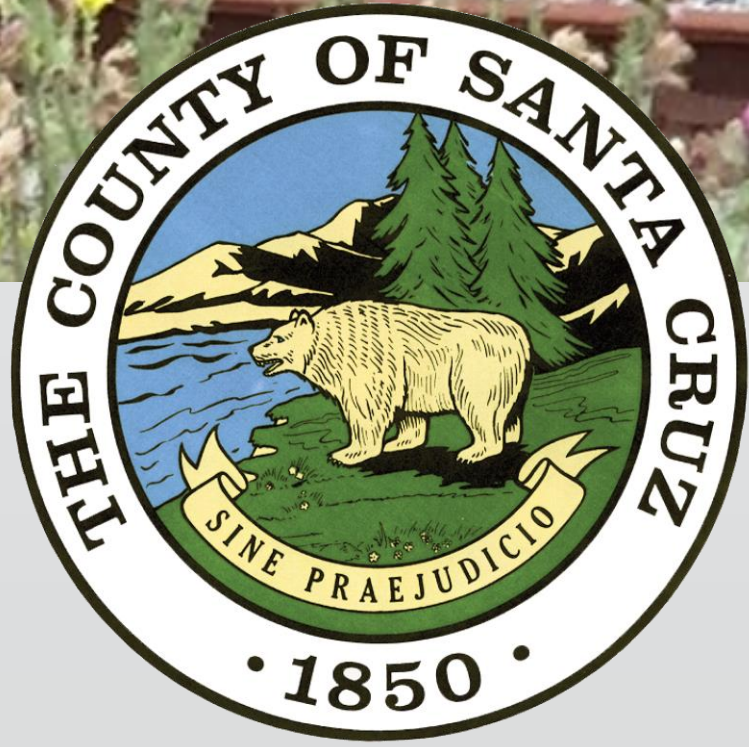
COASTAL RAIL TRAIL SEGMENTS 10 AND 11

DRAFT ENVIRONMENTAL IMPACT REPORT (EIR) PUBLIC MEETING

COUNTY OF SANTA CRUZ

November 16, 2023
5:00 pm-7:30 pm





HOUSE KEEPING ITEMS

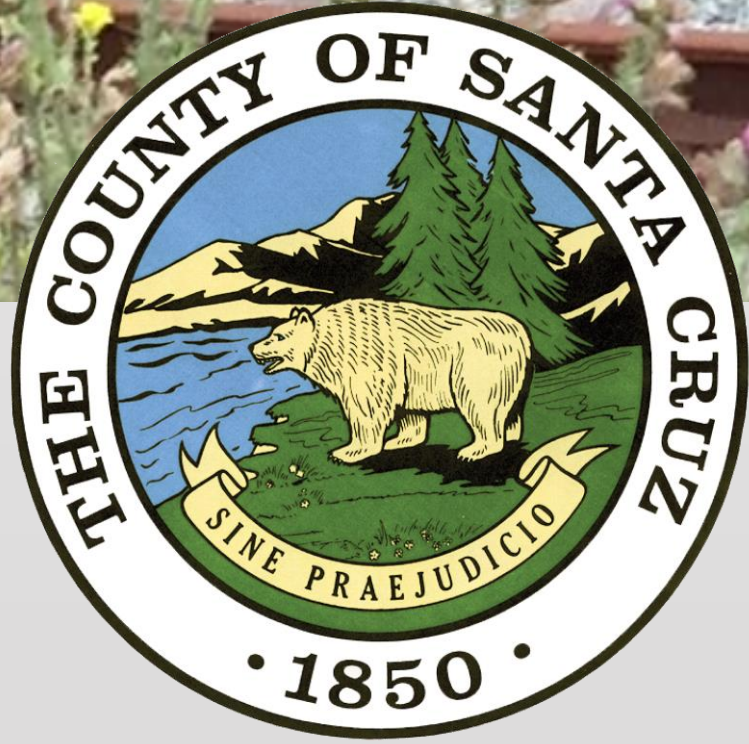
- Presentation followed by Verbal Comment Period
- This is a public meeting and conversations will be recorded and uploaded to the County website.

www.santacruzcountycalifornia.gov/RailTrail

- Public Review ends:

Friday, December 15, 2023 @ 5:00 PM

- Submit written comments to: RailTrail@santacruzcountycalifornia.gov



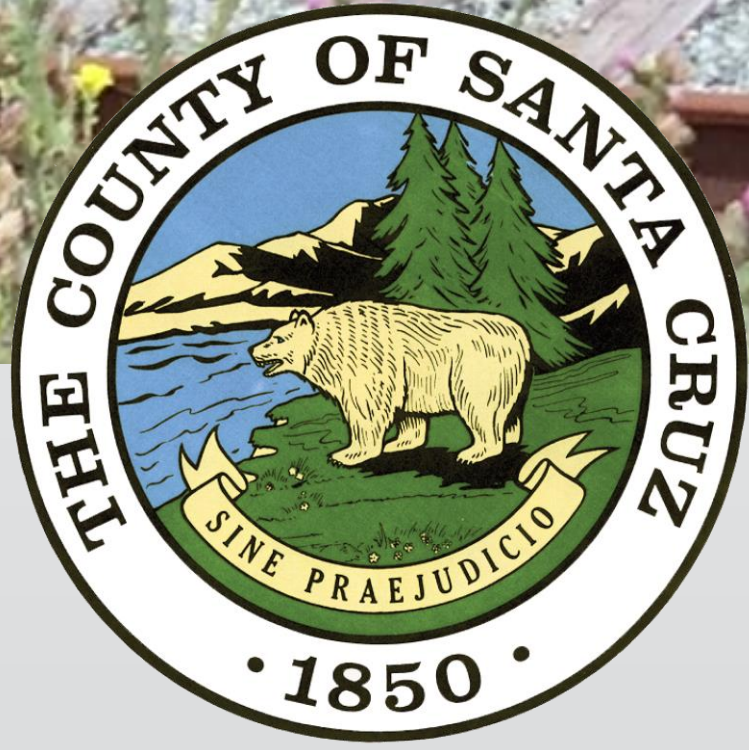
Para los residentes que hablan español, esta diapositiva contiene información para solicitar traducción al español, así como a donde enviar sus comentarios (for Spanish Speaking Residents)

El Condado agradece sus comentarios sobre el Borrador del Informe de Impacto Ambiental disponible en español. Por favor proporcione sus comentarios en español antes del **15 de diciembre de 2023**, a:

Rob Tidmore, Gestor de Proyectos (*Project Manager*)
979 17th Avenue, Santa Cruz, CA 95062
o al correo electrónico RailTrail@santacruzcountyca.gov

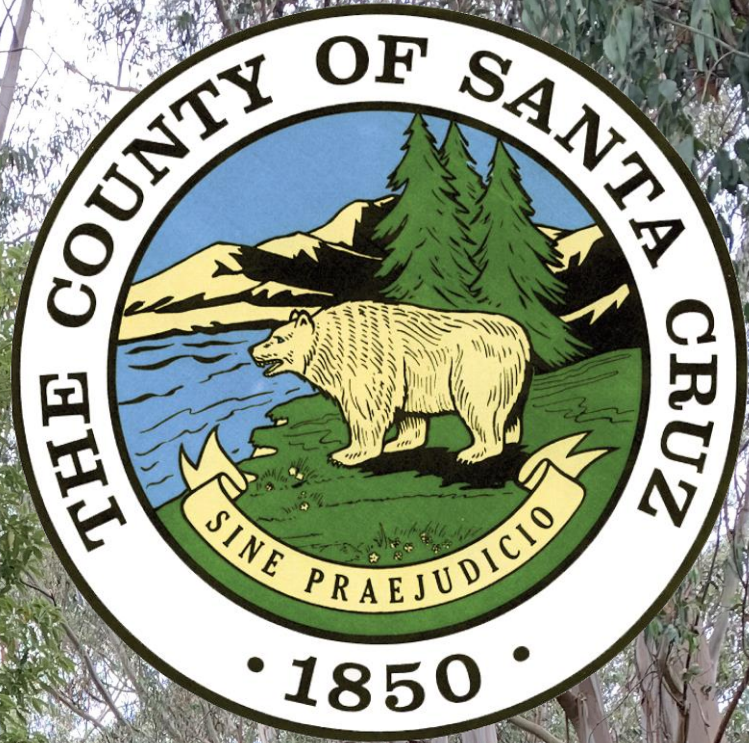
Si desea comunicarse directamente con un miembro del personal del condado que hable español con respecto al Borrador del Informe de Impacto Ambiental (EIR), comuníquese con:

Mariana Colibri-Urgo, 831-454-7963 o Mariana.Colibri-Urgo@santacruzcountyca.gov



MEETING OUTLINE

- Introduction of Project Team
- Project Overview
- Clarification Questions
- Environmental Review Process
- Summary of Public Draft EIR
- Verbal Comments on Draft EIR

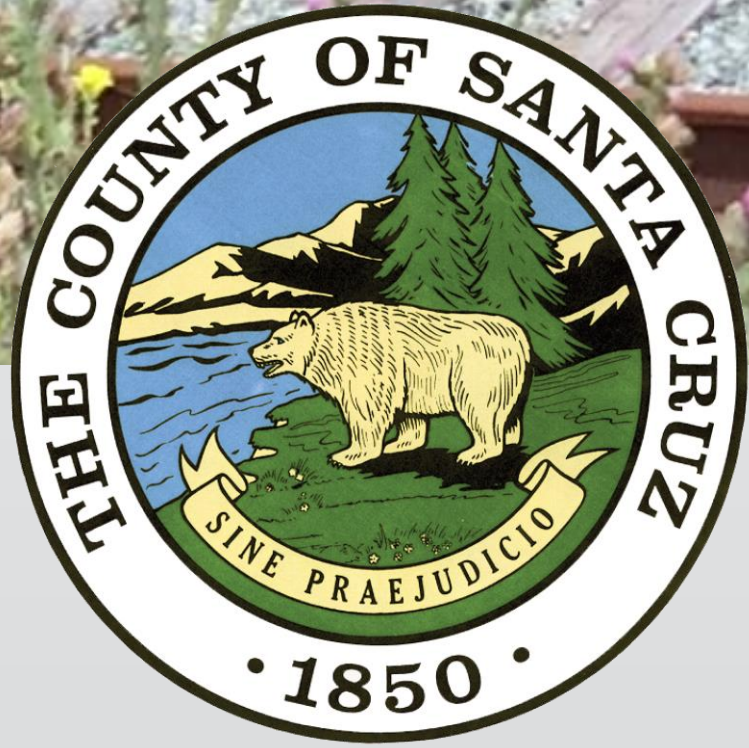


TEAM INTRODUCTIONS

- Lead Agency – *County of Santa Cruz*
- Responsible/Partner Agencies
 - *Santa Cruz County Regional Transportation Commission*
 - *City of Capitola*
- Design Consultant - *RRM Design Group*
- Environmental Consultant – *Harris & Associates Team*



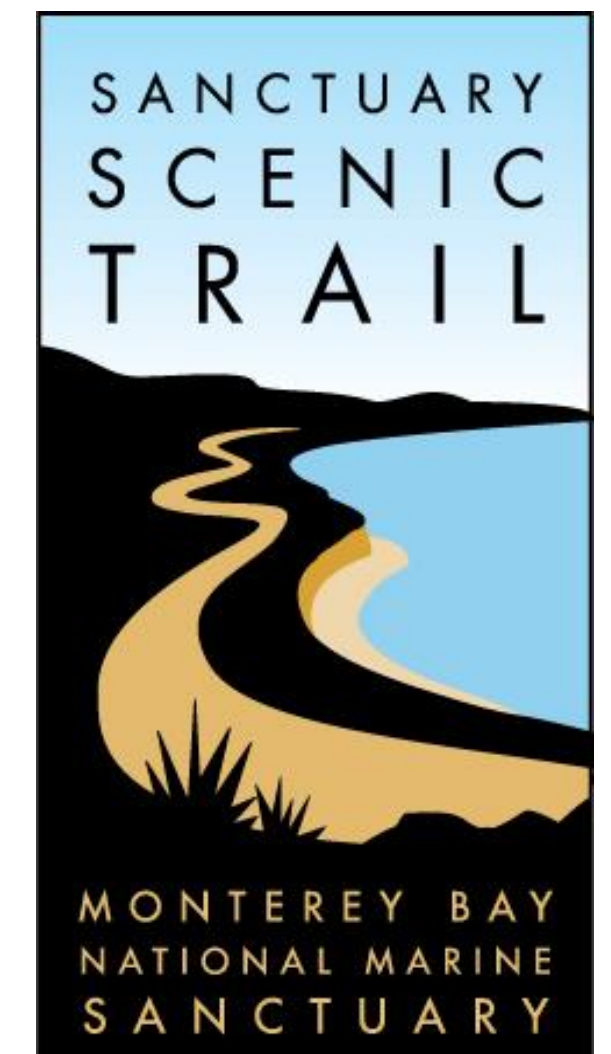
PROJECT OVERVIEW



PROJECT OVERVIEW

BACKGROUND & CONTEXT

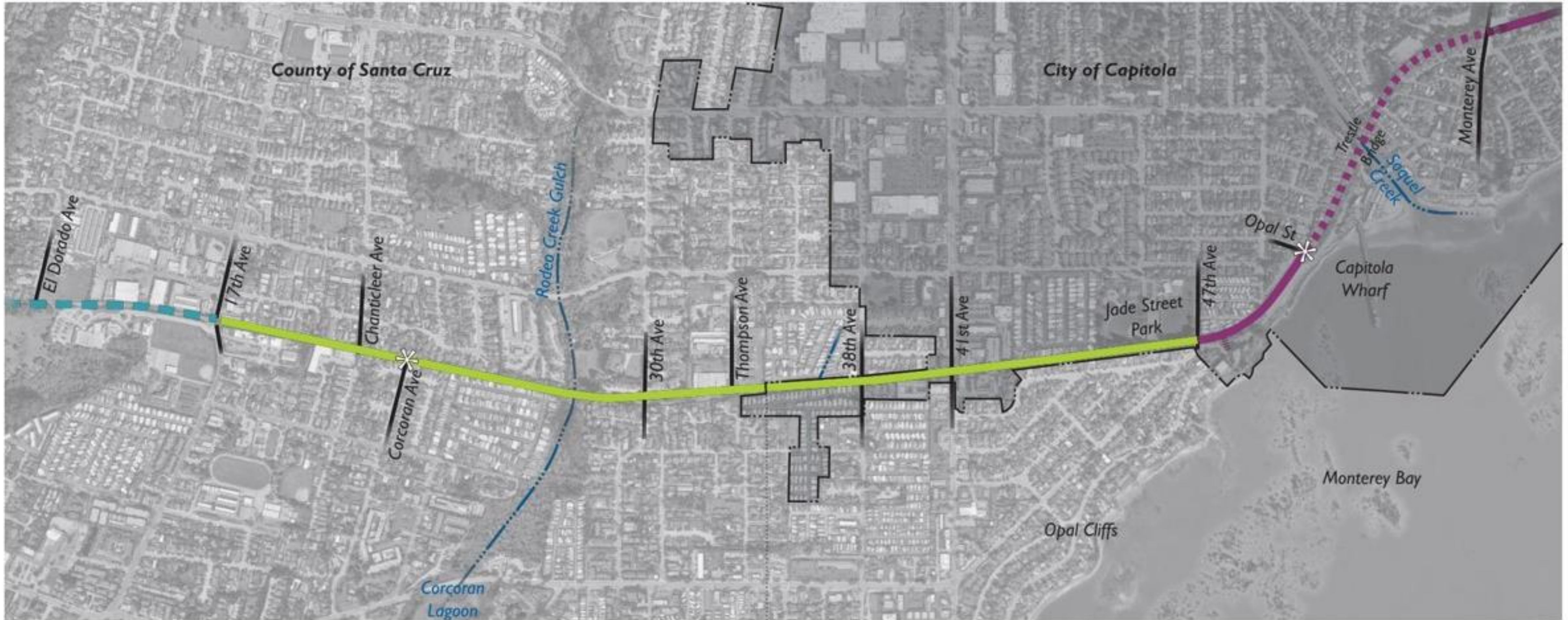
- Monterey Bay Sanctuary Scenic Trail (MBSST)
 - Trail Master Plan & Programmatic EIR
 - 50-mile trail network
 - Connects to Monterey County
 - 32-mile Coastal Rail Trail/Santa Cruz Branch Line
 - Adopted by County of Santa Cruz in 2014



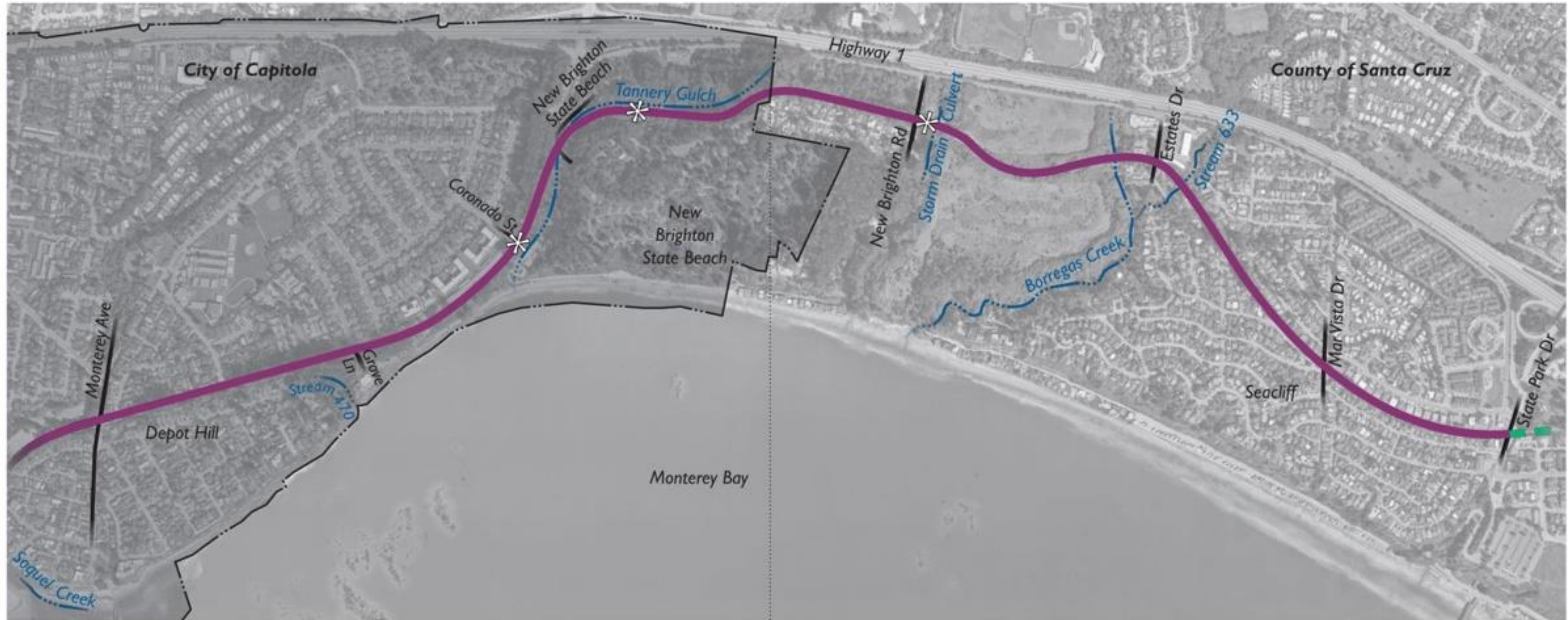
The Coastal Rail Trail



SEGMENT 10 ALIGNMENT

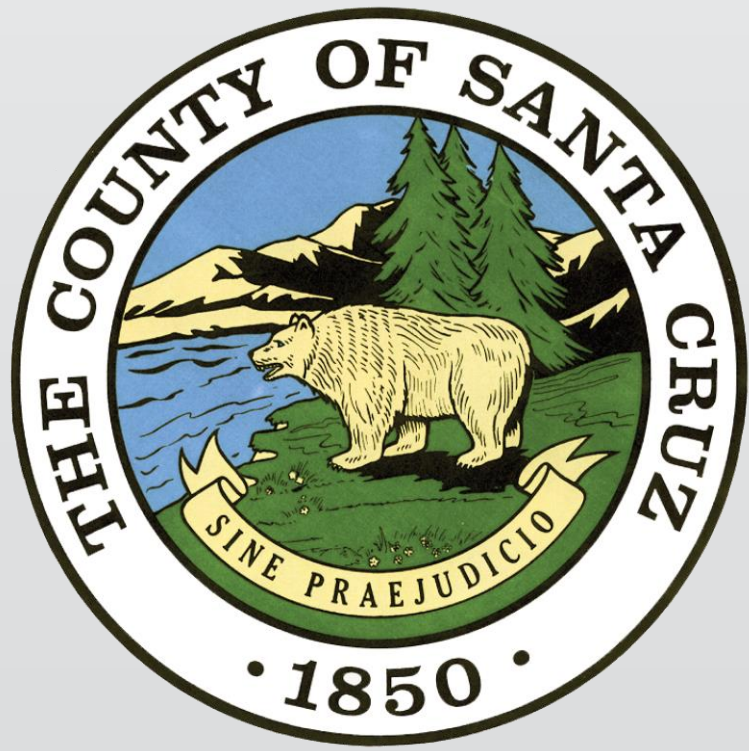


SEGMENT 11 ALIGNMENT



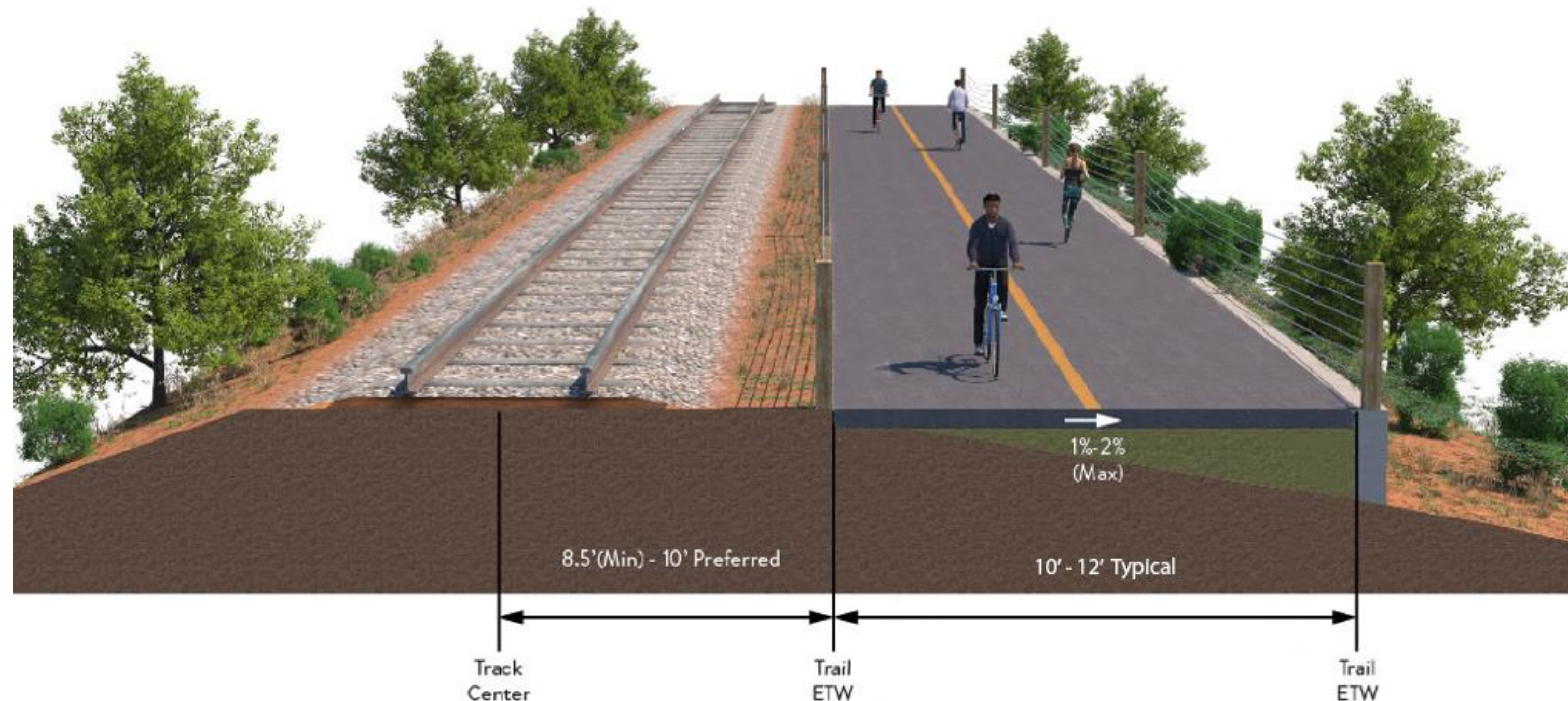
SEGMENT 11

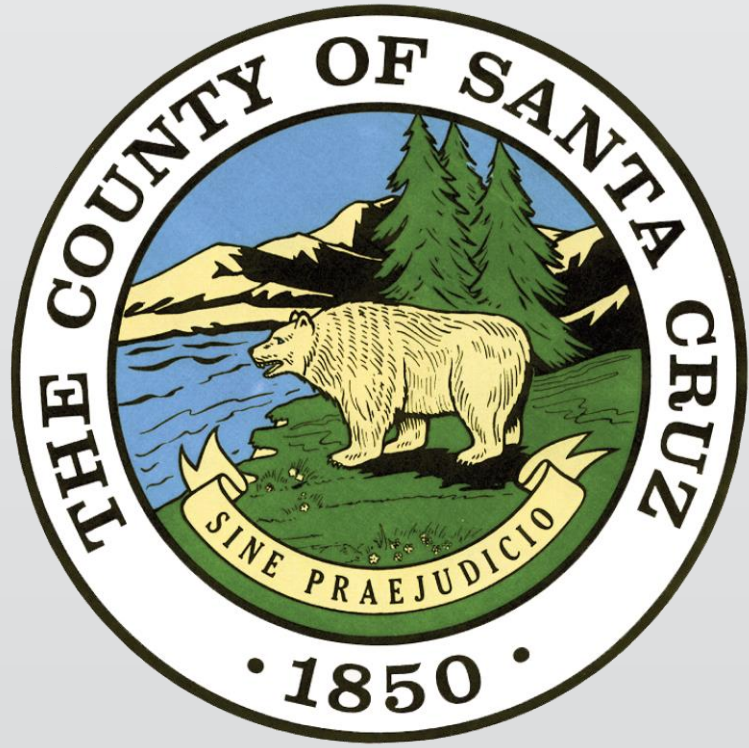
SEG. 12



Ultimate Trail Configuration (Trail next to Rail Line)

- Generally 12' wide. 4.2 miles long.
- Segment 10: Inland side of railroad tracks
- Segment 11: Coastal side of railroad tracks, except for Mar Vista Drive to State Park Drive





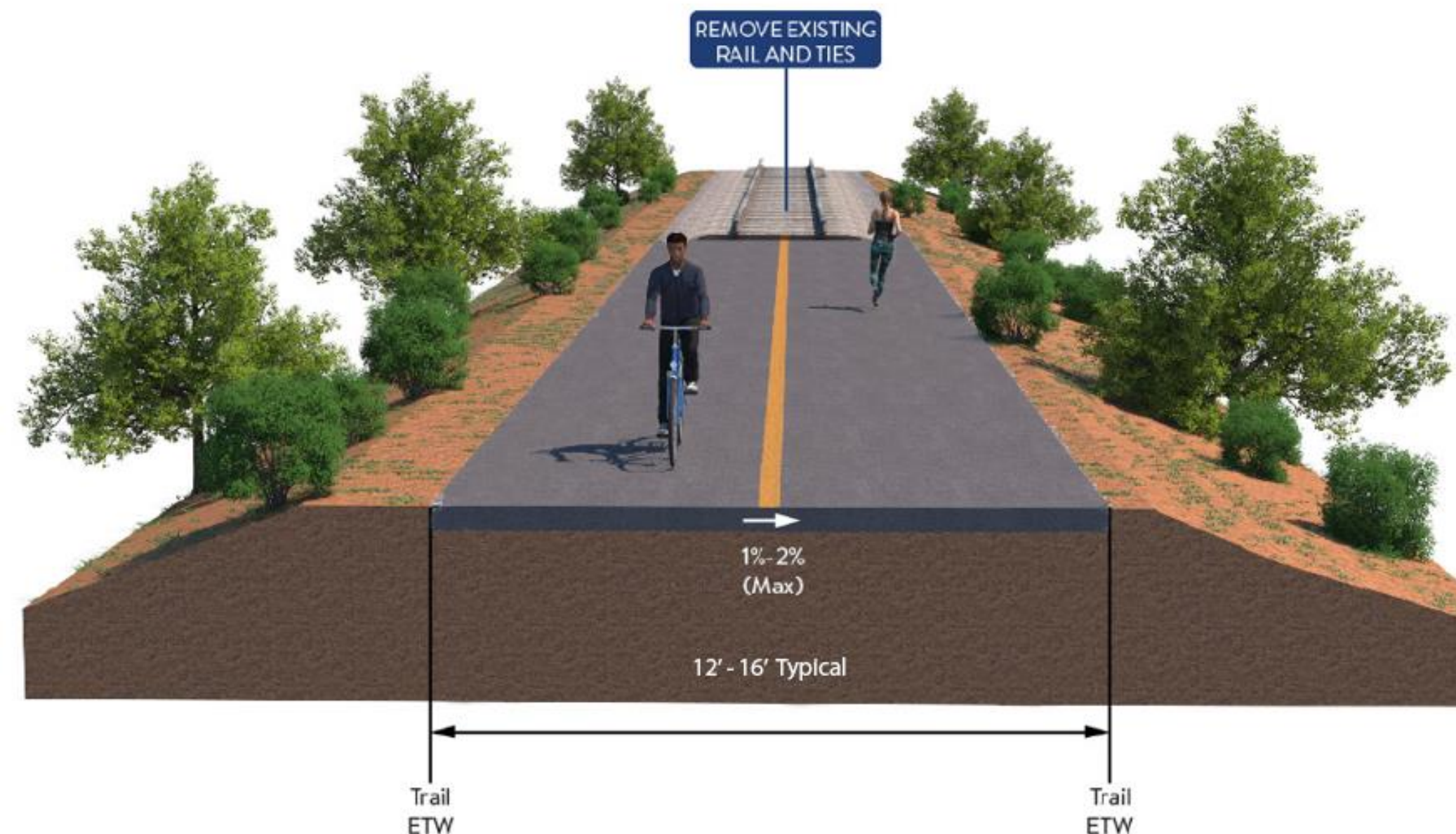
Optional Interim Trail (Trail on the Rail Line)

- Generally 16 feet wide, 4.7 miles long
- Three phases, requires railbanking

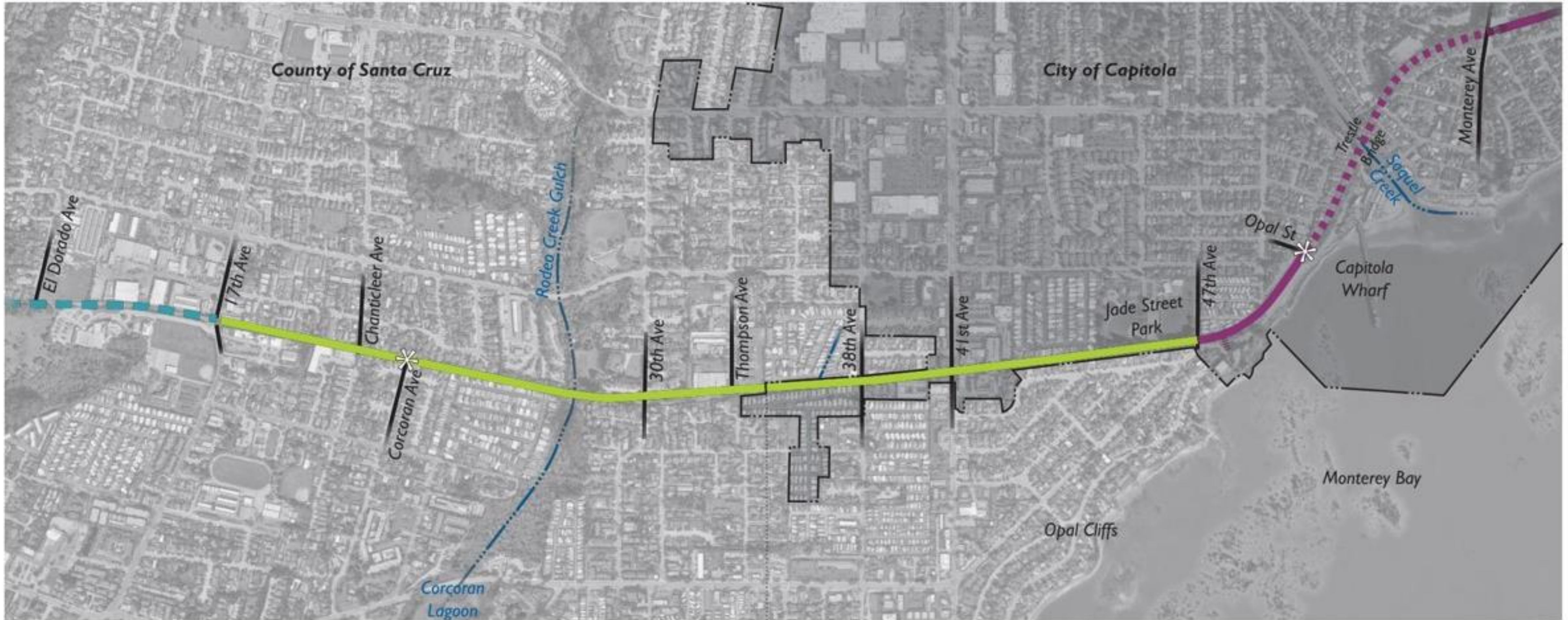
Part 1. Remove rail and construct Interim Trail on centerline

Part 2. Remove Interim Trail and rebuild rail line

Part 3. Construct Ultimate Trail Configuration (12 feet wide, 4.2 miles long)



SEGMENT 10 ALIGNMENT

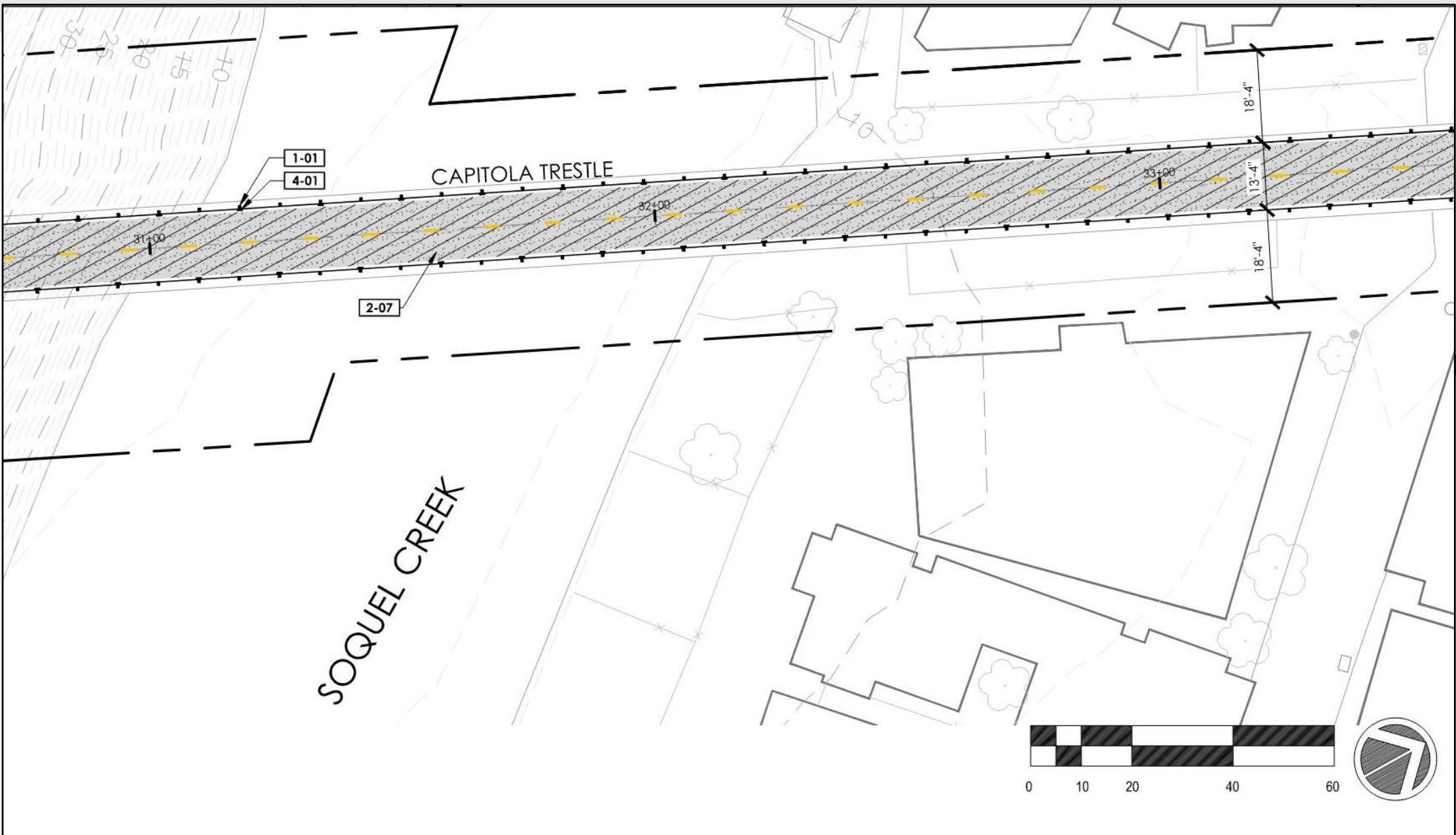


CAPITOLA VILLAGE

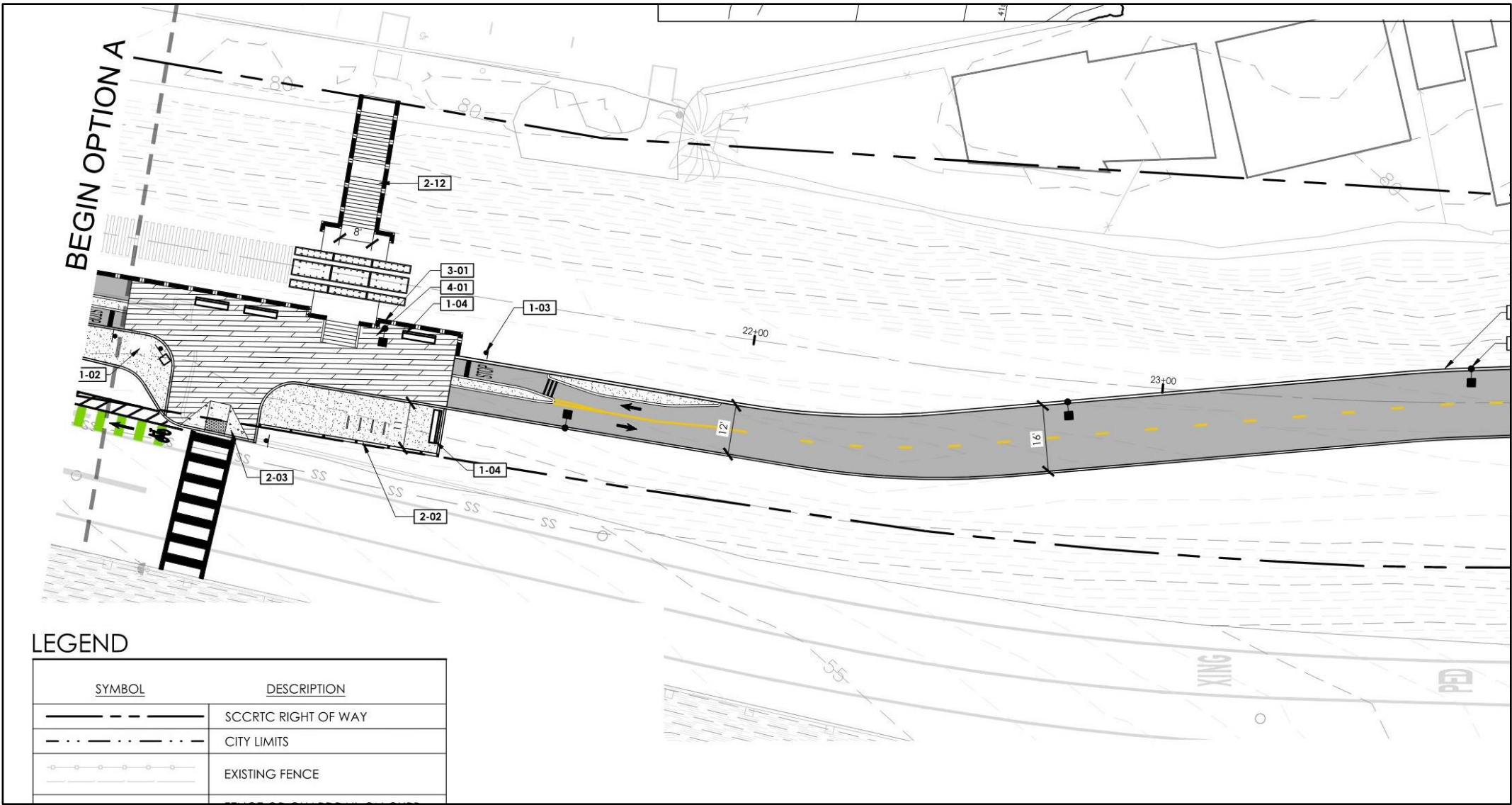
Ultimate Trail Configuration

- Trail users directed to on-street bike lanes and sidewalks
- Wayfinding directional signage
- Green pavement paint and restriping for safety
- Trestle replacement part of separate RTC project





Interim Trail & Design Option A



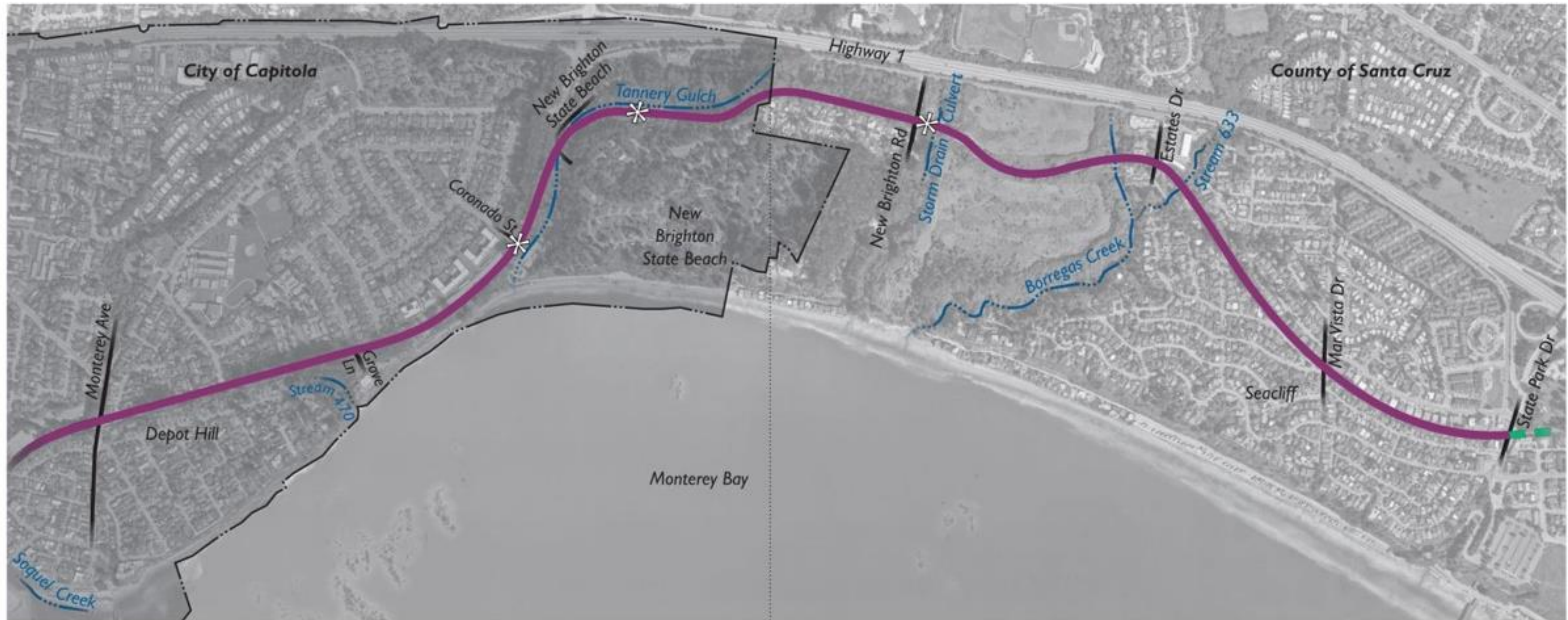
Design Option A

CAPITOLA TRESTLE

Interim Trail & Design Option A

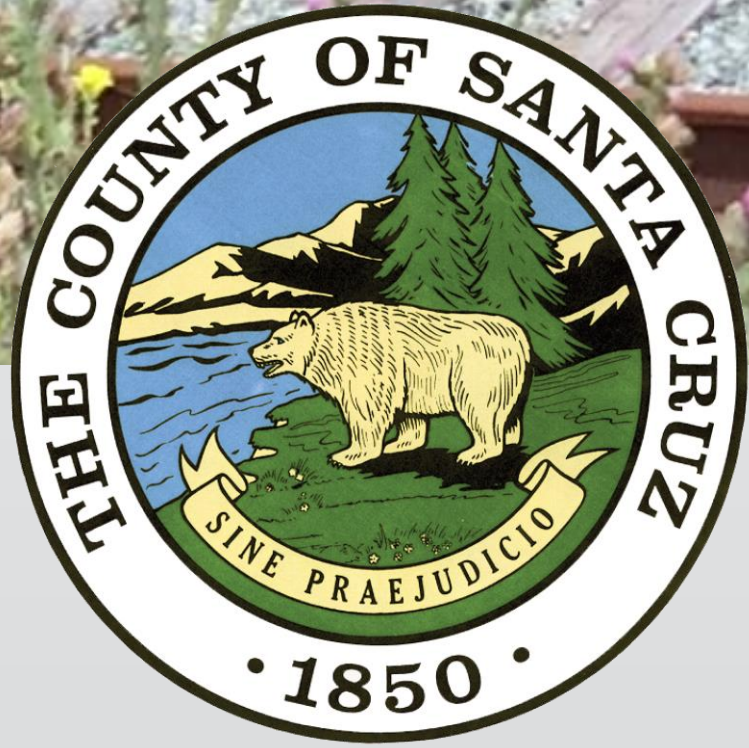
- Trail users remain on rail line alignment over Capitola Trestle
- Removal of tracks
- Requires structural repairs to Trestle and conversion to trail use

SEGMENT 11 ALIGNMENT



SEGMENT 11

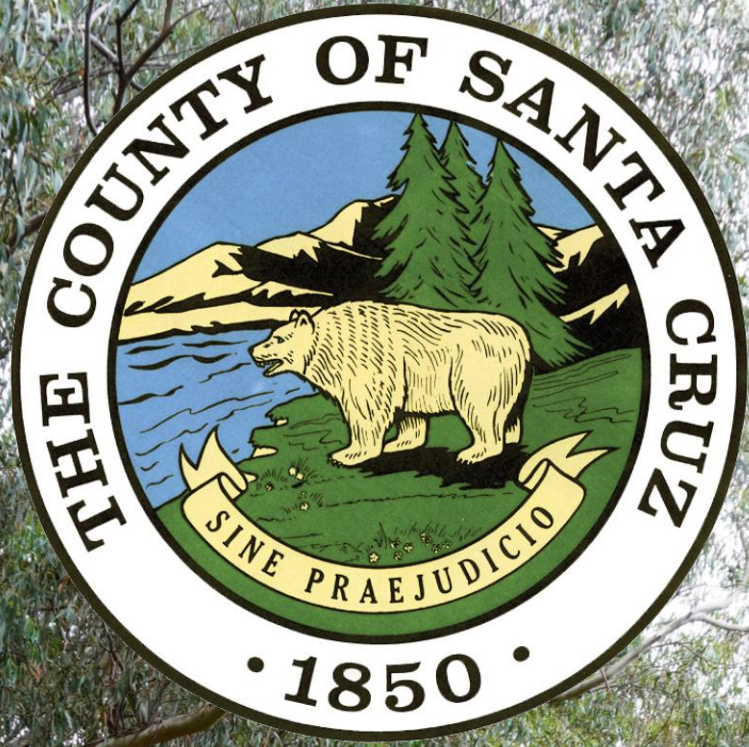
SEG. 12



PROJECT OVERVIEW

PUBLIC OUTREACH TO DATE

- October 12, 2021 – Rio Del Mar Improvement Association
- November 17, 2021 – NOP Scoping Meeting
- January 13, 2022 – Mid County Democrats
- February 17, 2022 – RTC Transportation Policy Workshop
- April 6, 2022 – Virtual Schematic Design Open House
- April 11, 2022 – RTC Bicycle Advisory Committee
- April 12, 2022 – RTC Elderly and Disabled Technical Advisory Committee
- April 13, 2022 – In-person Schematic Design Open House
- April 19, 2022 – Online survey posted for 60 days to allow the public to comment on the design
- May 17, 2022 – Walk for Wellness Live Oak event
- May 19, 2022 – Bike and Walk to School Day at Live Oak Elementary
- May 19, 2022 – Boys & Girls Club Live Oak End of Year event
- May 23, 2022 – Live Oak Resource Center Food Distribution event
- May 24, 2022 – Family Drop-In Day at Chanticleer Park
- May 27, 2022 – Walk for Wellness Capitola event
- June 6, 2022 – Parks and Recreation Commission
- March 14, 2023 – Seacliff Improvement Association
- March 23, 2023 – Capitola City Council
- October 26, 2023 – Capitola City Council



CLARIFICATION QUESTIONS?

- Online viewers use the Q&A function
- Focus on **clarifying** questions regarding the Project overview
- Questions regarding the Draft EIR shall be submitted as comments by December 15. **Reponses will be included in the Final EIR.**

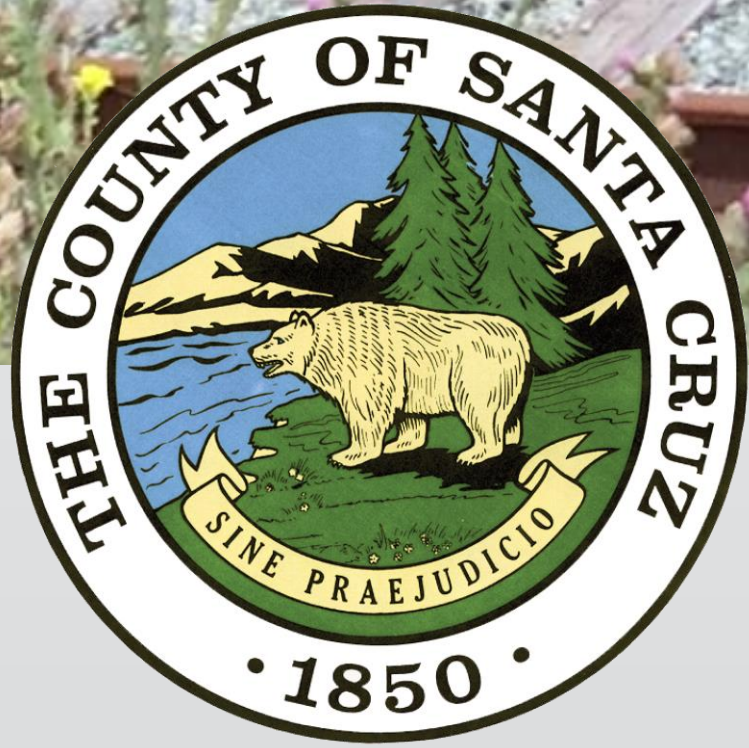


ENVIRONMENTAL REVIEW PROCESS

© 2018 Pearson Education, Inc. or its affiliate(s). All rights reserved.
© 2018 Pearson Education, Inc. or its affiliate(s). All rights reserved.
© 2018 Pearson Education, Inc. or its affiliate(s). All rights reserved.
© 2018 Pearson Education, Inc. or its affiliate(s). All rights reserved.

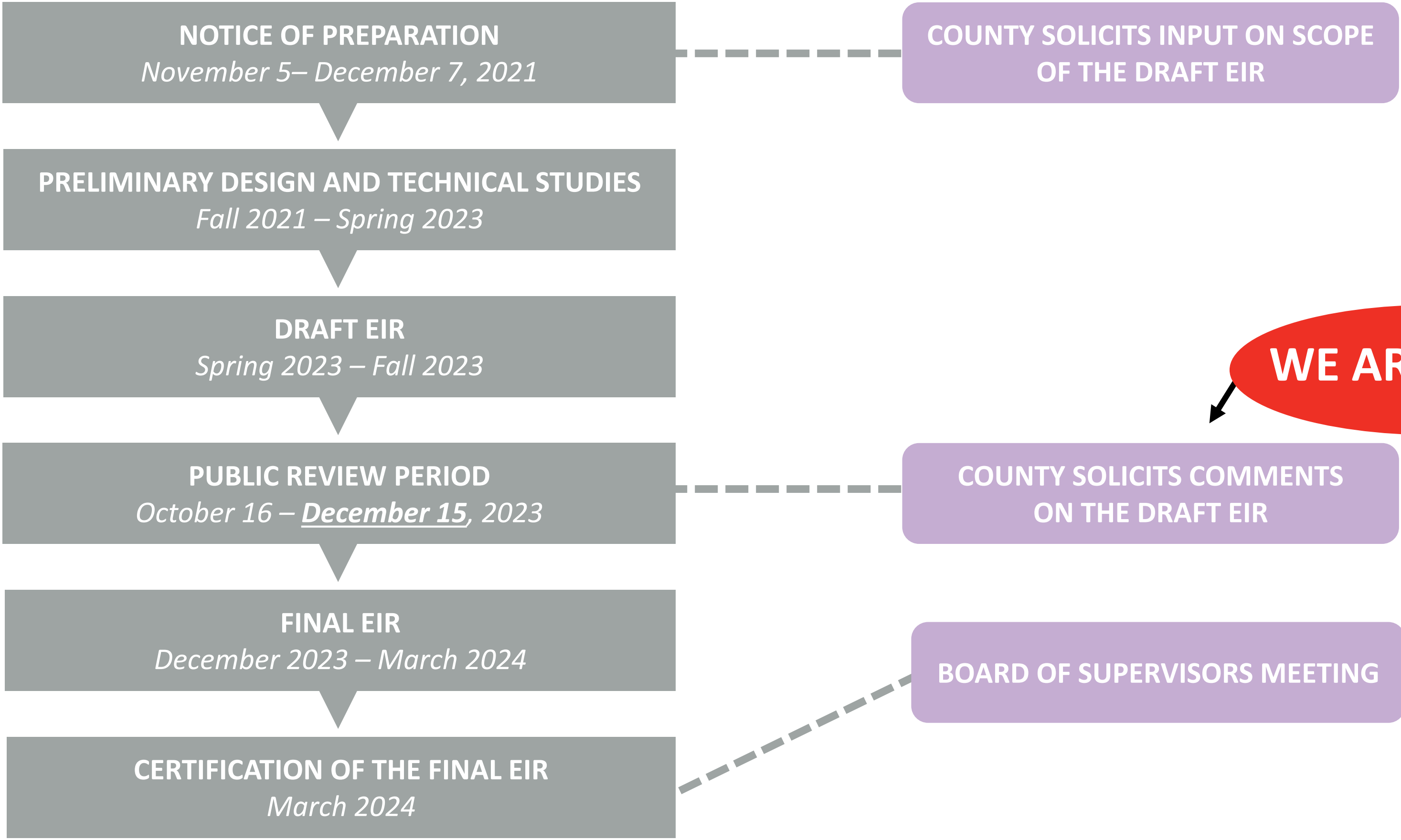
- 20

20

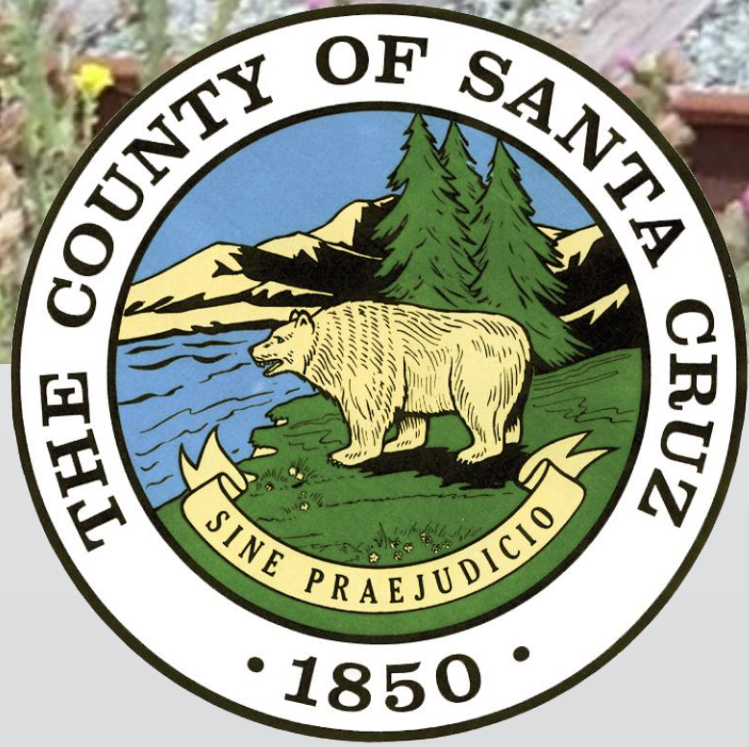


ENVIRONMENTAL
REVIEW
PROCESS

THE EIR PROCESS



WE ARE HERE

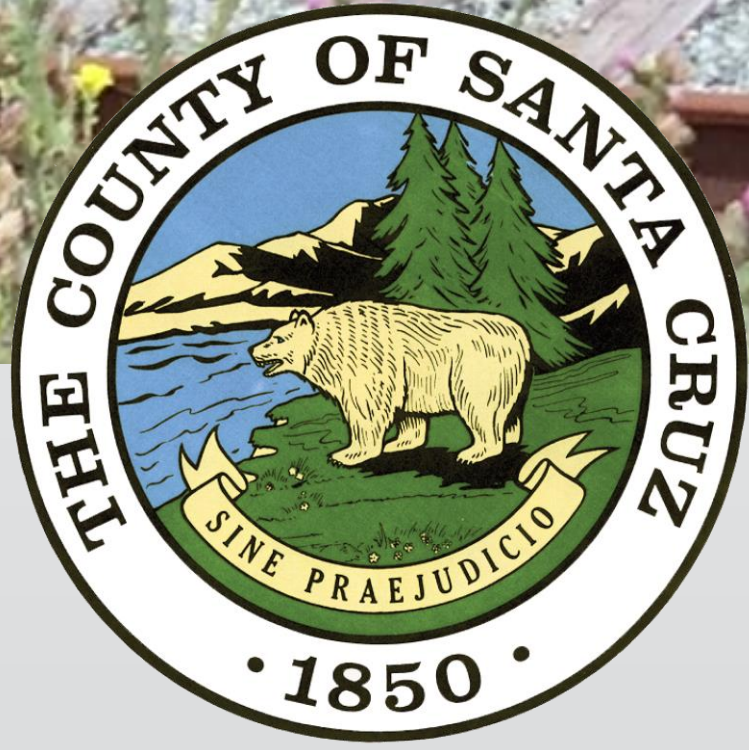


SUMMARY OF DRAFT EIR

Coastal Rail Trail Segments 10 and 11
Draft Environmental Impact Report
State Clearinghouse #2021110080



County of Santa Cruz
October 2023



SUMMARY OF DRAFT EIR

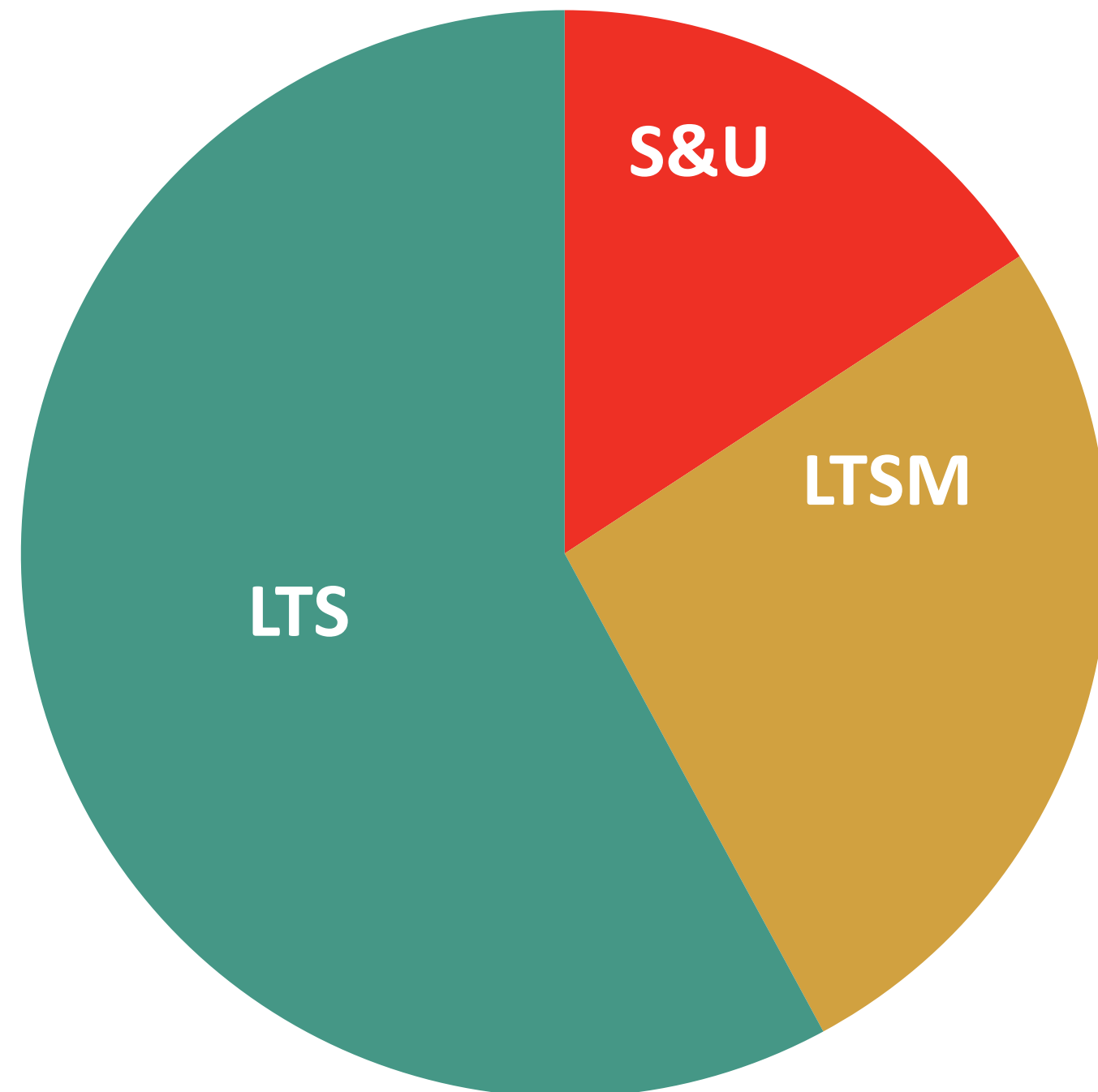
PROPOSED PROJECT

Ultimate Trail Configuration (Trail next to Rail Line)

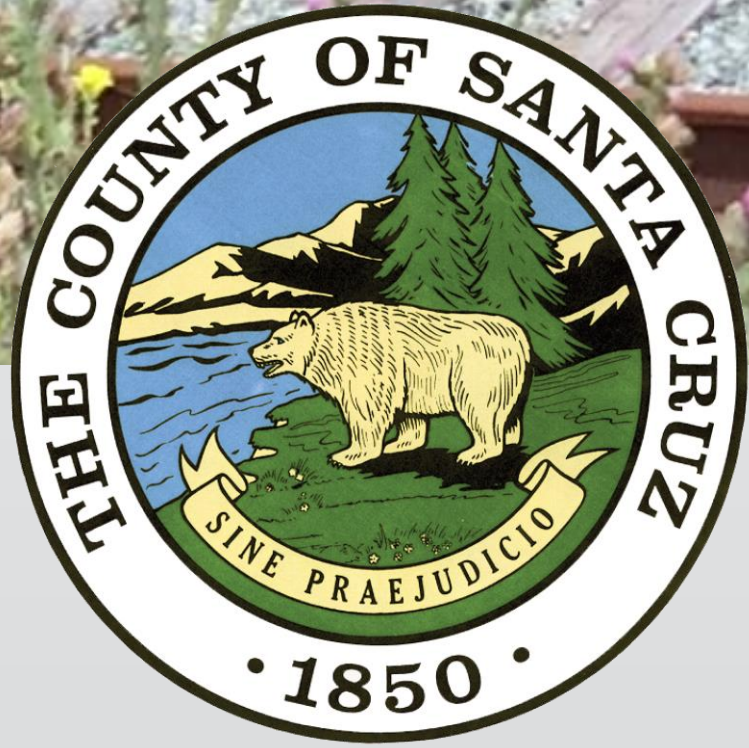
Optional Interim Trail (Trail on the Rail Line)

- Part 1. Remove tracks/ties. Construct 16-foot-wide Interim Trail on centerline
- Part 2. Remove Interim Trail and rebuild rail line
- Part 3. Construct 12-foot-wide Ultimate Trail Configuration

EIR TOPICS AND IMPACTS IDENTIFIED

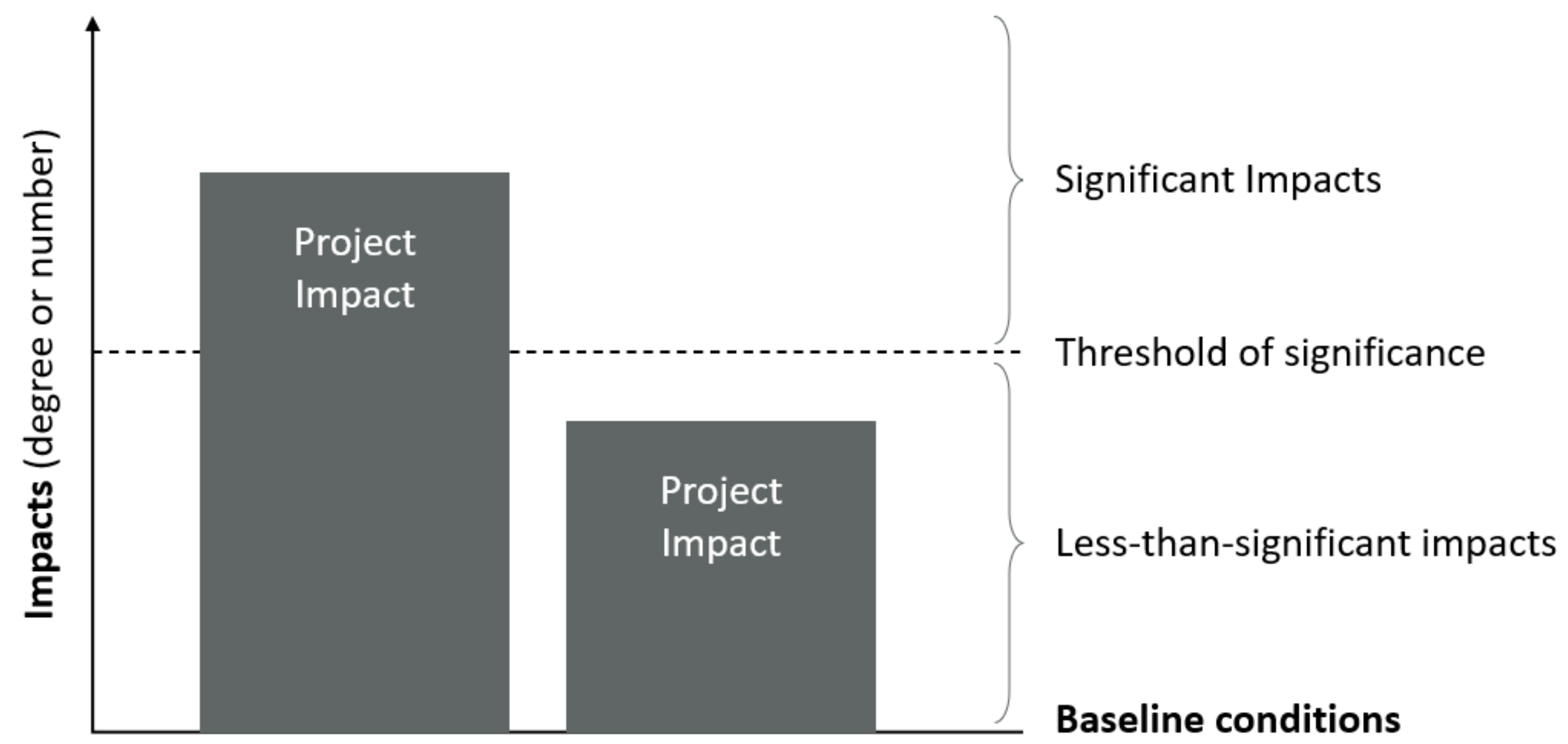


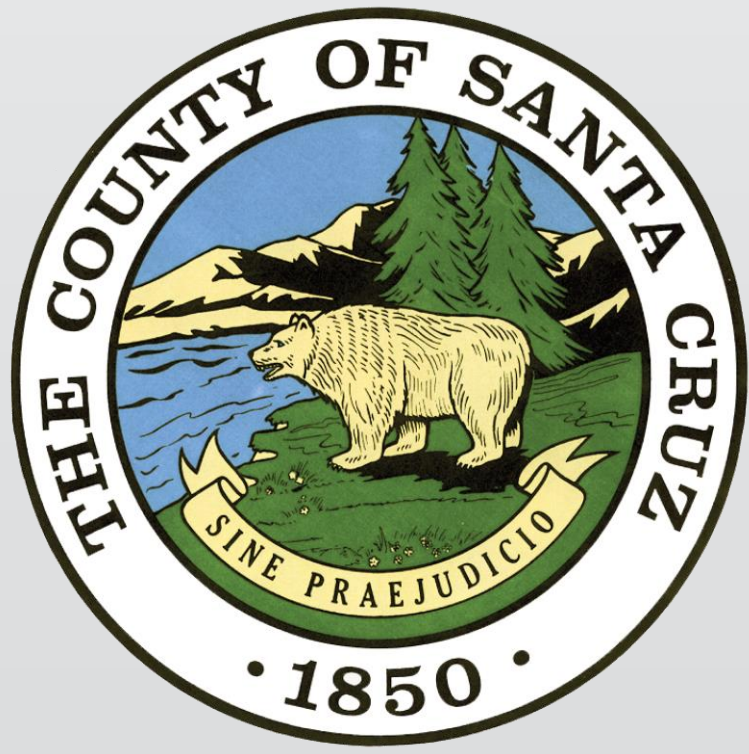
1. Aesthetics
2. Biological Resources
3. Greenhouse Gas Emissions
4. Cultural Resources
5. Geology/Soils
6. Hazards/Hazardous Materials
7. Noise
8. Tribal Cultural Resources
9. Agricultural Resources
10. Air Quality
11. Energy
12. Hydrology/Water Quality
13. Land Use/Planning
14. Mineral Resources
15. Population/Housing
16. Public Services
17. Recreation
18. Transportation
19. Utilities/Service Systems
20. Wildfire



SUMMARY OF DRAFT EIR

ENVIRONMENTAL IMPACT ANALYSIS





SUMMARY OF DRAFT EIR

SUMMARY OF PROJECT IMPACTS



Ultimate Trail Configuration

48 Potential Impacts

- 29 LTS
- 13 LTSM
- 6 S&U
 - Aesthetics (2)
 - Biological Resources (3)
 - Greenhouse Gas Emissions (1)



Optional Interim Trail

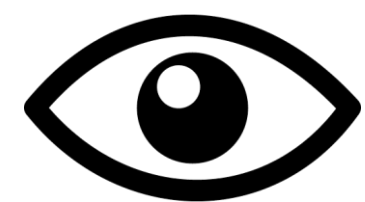
48 Potential Impacts

- 28 LTS
- 14 LTSM
 - MM CR-1, MM HAZ-1c
- 6 S&U
 - Aesthetics (2)
 - Biological Resources (3)
 - Greenhouse Gas Emissions (1)

LTS = Less than Significant, LTSM = Less than Significant with Mitigation, S&U = Significant & Unavoidable



SIGNIFICANT & UNAVOIDABLE IMPACTS



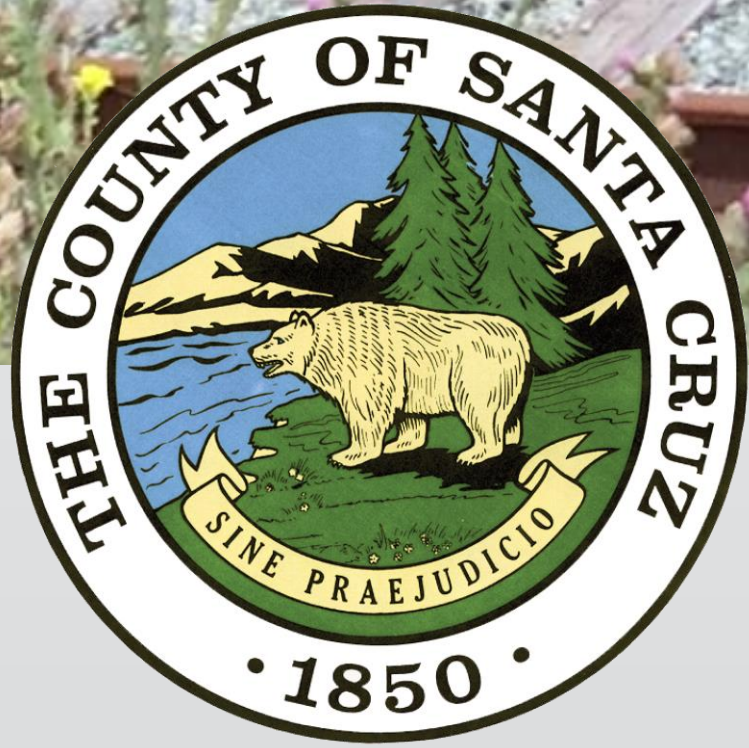
Aesthetics/Visual Resources (2)



Biological Resources (3)



Greenhouse Gas Emissions (1)



SUMMARY OF
DRAFT EIR

BENEFICIAL EFFECTS

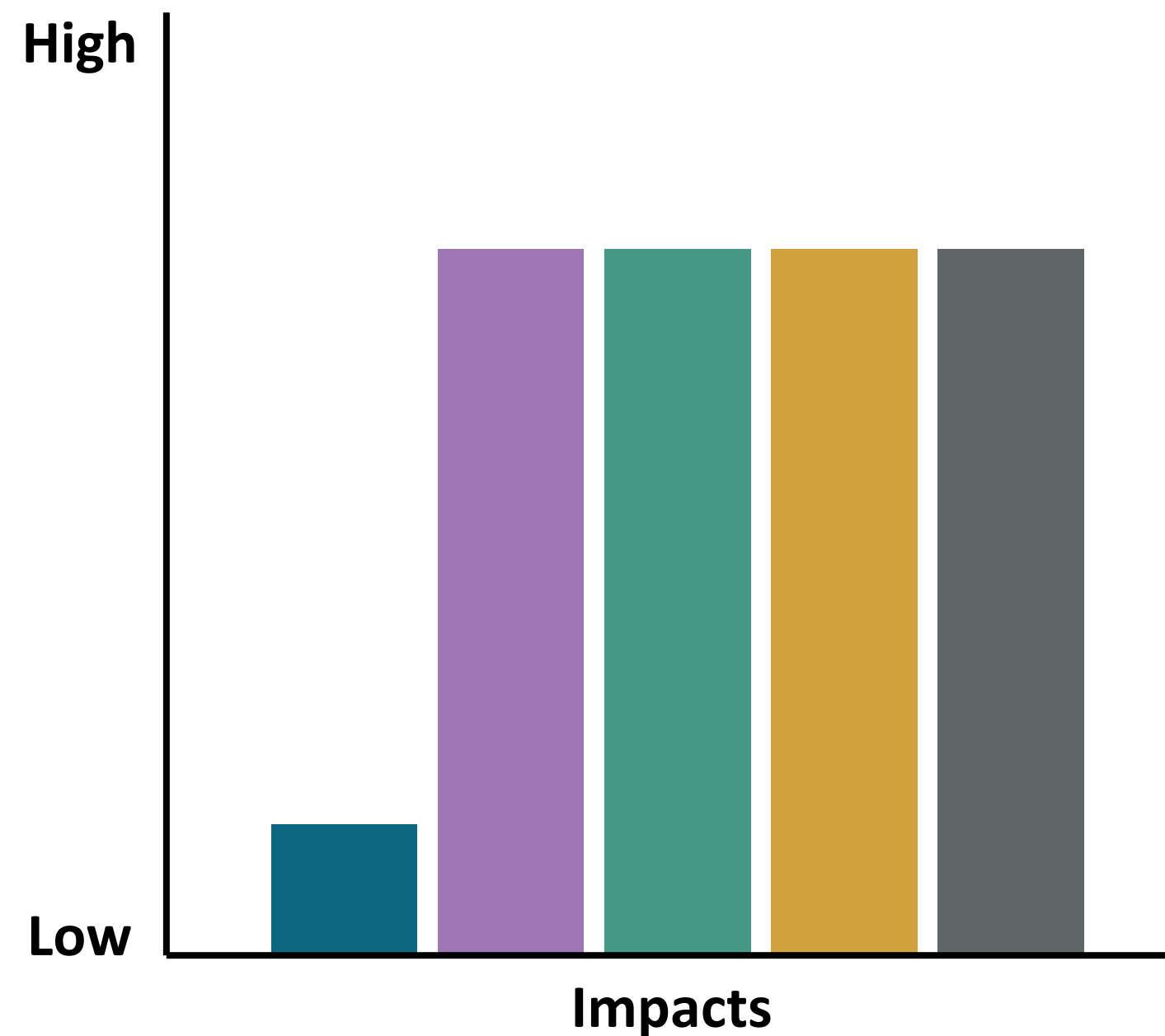
Aesthetics	Facilitate public access to scenic vistas
Air Quality/Greenhouse Gas Emissions	Reduce vehicle emissions
Land Use	Increase connectivity across established communities
Public Safety & Services	Improve access to parks/rec facilities and to rail corridor for emergency response
Transportation	Improve circulation and safety by providing multi-use trail separated from vehicular traffic

PROJECT ALTERNATIVES



- **Alternative 1: Trail Only**
 - 16 feet wide on the rail line
 - Permanent removal of rail
- **Alternative 2: Rail with Trail on Opposite Side of Tracks**
 - 12 feet wide
- **Alternative 3: No Project**

COMPARING IMPACTS



Least Impacts

- Alternative 3: No Project

Similar Impacts




- Ultimate Trail Configuration (Trail next to Rail Line)
- Optional Interim Trail (Trail on Rail Line)
- Alternative 1: Trail Only
- Alternative 2: Rail with Trail on Opposite Side of Tracks



COMPARING TREE REMOVAL

	Proposed Project		Project Alternatives	
	Ultimate Trail Configuration	Optional Interim Trail	Alternative 1 (Trail Only)	Alternative 2 (Trail on Opposite Side of Tracks)
Trail Width	12 feet	16 feet	16 feet	12 feet
Trees Removed	803 trees	957 trees Part 1: 288 trees Part 2: 0 trees Part 3: 669 trees	288 trees	1,000 trees

COMPARED TO ULTIMATE TRAIL CONFIGURATION:

	More or Less Impacts	
	<div></div> <div>Aesthetics Biological Resources Greenhouse Gas</div>	<div></div> <div>Construction-Related Impacts*</div>
Optional Interim Trail (Trail on the Rail Line)	More	More
Alternative 1 (Trail Only)	Less	More
Alternative 2 (Rail with Trail on Opposite Side of Tracks)	More	More

*Air Quality, Cultural Resources, Geology/Soils, Hazardous Materials, Hydrology/Water Quality, Noise, Tribal Cultural Resources, Utilities (Solid Waste)

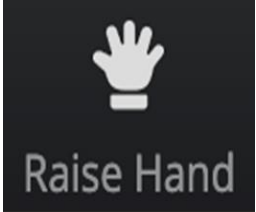

ENVIRONMENTALLY SUPERIOR

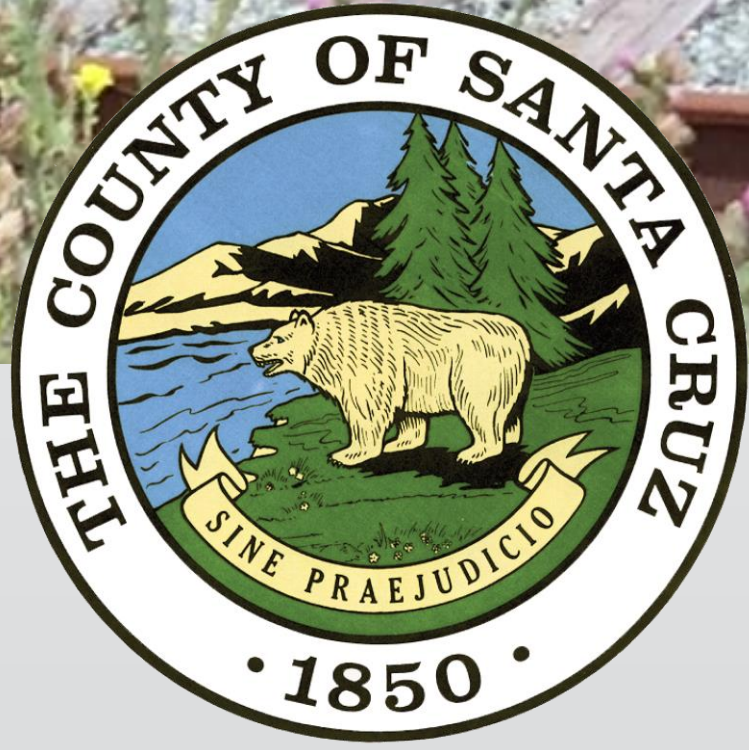


Measure	Environmentally Superior	Reason
Minimizing Significant and Unavoidable Project Impacts	Alternative 1 (Trail Only)	Less tree removal
Environmentally Superior for Most Resource Topics	Ultimate Trail Configuration	Less ground disturbance



VERBAL COMMENTS ON DRAFT EIR

- Recorded, transcribed, and responded to in Final EIR
- Raise your hand on zoom toolbar  then  when called on
- When called, clearly state your first and last name
- **2 minutes** (submit written comments if need more time)
- Responses to verbal & written comments will be in Final EIR
- Comments should focus on the **sufficiency of the Draft EIR** in analyzing potential impacts on the environment



SUBMIT WRITTEN COMMENTS ON DRAFT EIR

- Submit written comments to Rob Tidmore by mail or email:

Rob Tidmore, Project Manager
County of Santa Cruz Parks Department,
979 17th Avenue, Santa Cruz, CA 95062

or

RailTrail@santacruzcountyca.gov

- Written comments due: **Friday, December 15, 2023 @ 5:00 PM**