

REDUCE REUSE RECYCLE



# ZERO WASTE

## News

A publication for County of Santa Cruz GreenWaste Recovery  
Commercial Customers | Summer 2022



**SB 1383  
REQUIREMENTS  
FOR BUSINESSES**  
*Page 2*



# SB 1383 REQUIREMENTS FOR BUSINESSES

## What is SB 1383?

SB 1383 is a state law that establishes statewide targets to reduce organic waste (food and plant) disposal from the landfill (by 75%) to reduce greenhouse gases and to increase edible food recovery (by 20%) to increase food security. Businesses who will be participating in our food rescue programs are as follows:

## New! Food Donaton Requirements

Applies to select industries, which are categorized into a tier system.

### Tier One Generators

- Supermarkets >\$2 million
- Grocery stores >10,000 sq ft.
- Food service providers
- Food service distributors
- Wholesale food vendors

### Tier One and Tier Two Generators

Are required to:

- Donate the maximum amount of edible food that would otherwise be disposed to a food recovery organization or service such as: food banks, food pantries, places of worship, and soup kitchens.
- Establish contracts or written agreements with food recovery organizations that will collect your excess food on site.
- Maintain record of food donation activities on site.

If your business has edible food available for recovery and is not classified as a Tier One or Tier Two Generator, visit the County's website to learn about food donation opportunities. You can help your community through a food recovery organization and make a tax deductible food donation at the same time.

For help educating your team, please contact the County of Santa Cruz Help Team Coordinator via email at [zerowaste@santacruzcounty.us](mailto:zerowaste@santacruzcounty.us)





**Please place all organic items in the organics cart or bin.**  
Por favor coloque todos los artículos orgánicos en el bote o contenedor orgánicos.



**Coffee & Filters**  
*Café & Filtros*



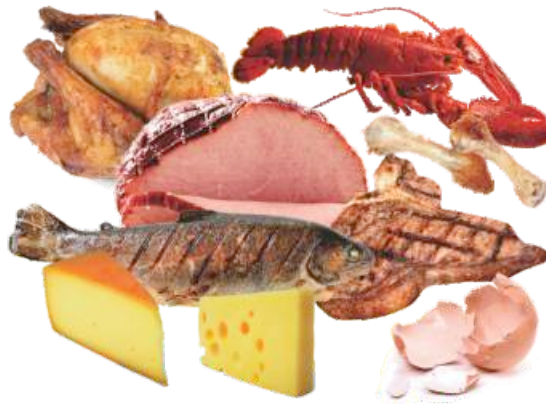
**Grains**  
*Granos*



**Fruits & Vegetables**  
*Frutas & Verduras*



**Yard Trimmings**  
*Recortes de Jardín*



**Dairy & Cooked Meats**  
*Lácteos & Carne Cocinada*

If you do not have an Organic bin or cart, order one at **831-426-2711**.

**NOTE:** BPI Certified compostable food ware allowed for businesses ONLY.



**Compostable Food Wares**  
*Productos de comida compostables*



**NO LIQUIDS**  
NO LIQUIDOS



**NO HAZARDOUS WASTE**  
NO RESIDUOS PELIGROSOS



**NO RAW MEATS**  
NO CARNE CRUDA



**NO DIRT**  
NO TIERRA



**NO RECYCLABLE MATERIAL**  
NO MATERIAL RECICLABLE



**NO GARBAGE**  
NO BASURA





**Please place clean and dry recyclable items un-bagged in your recyclables cart or bin.**  
Por favor, coloque los artículos reciclables limpios y secos no embolsado en su carrito o contenedor de materiales reciclables.



**Metal**  
*Metal*



**Paper:**  
*El Papel*



**Cardboard**  
Unwaxed & flattened  
**Cartón**  
*Sin cera y aplanado*



**Glass**  
*Vidrio*



**Small Electronic Waste**  
*Desperdicios Pequeños Electrónicos*



**Plastic & Film**  
*Plástico y Película de Plástico*

**EMPTY**  
**CLEAN**  
**DRY**  
**VACÍO**  
**LIMPIO**  
**SECO**



**NO LIQUIDS**  
**NO LIQUIDOS**



**NO BATTERIES**  
**NO BATERÍAS**



**NO HAZARDOUS WASTE**  
**NO RESIDUOS PELIGROSOS**



**NO GARBAGE**  
**NO BASURA**



**NO FOOD**  
**NO COMIDA**



**NO YARD WASTE**  
**NO BASURA ORGÁNICA**





# WHAT GOES WHERE?

In Santa Cruz County, GreenWaste Recovery hauls organics, recyclables and garbage. The ability to find an endmarket for materials means they can recover more through our recycling and organic carts, and keep resources out of our landfill. But, do you know who processes these materials? GreenWaste takes the recyclable materials to Watsonville to be loaded onto large transfer trucks, and transports them to their San Jose Material Recovery Facility (MRF) for sorting and recycling. Check out this video of how your recyclables are managed! Organics are taken to the Buena Vista Landfill and composted by Keith Day Company into a rich renewable resource.



<https://www.greenwaste.com/about-us/processing-facility/>

## TREATED WOOD WASTE DISPOSAL

At Buena Vista Landfill and Ben Lomond Transfer Station, treated wood waste (TWW) can only be accepted from addresses within the Santa Cruz County including unincorporated Santa Cruz County, and the cities of Capitola, Scotts Valley, Santa Cruz and Watsonville.

Everyone wishing to dispose of TWW must have the TWW separate from other materials or your load may be rejected from drop off.

### HOMEOWNERS WHO SELF-HAUL:

- TWW accepted Monday - Saturday
- Customers must unload their TWW by hand into the bin
- Ben Lomond limited to 500 lbs. per day
- Waste Manifest required when transporting 50 lbs. or more

### SMALL & LARGE QUANTITY HAULERS, GENERATORS, SELF-TRANSPORTERS:

- TWW accepted Tuesday-Thursday at Buena Vista only
- Customers must unload the TWW by hand in bin
- Up to 10,000 lbs. per calendar year
- Waste Manifest Profile required





# RECYCLING GUIDES INSIDE!

Page 3 & 4



**County of Santa Cruz**  
**Community Development and Infrastructure**  
 701 Ocean Street, Room 410  
 Santa Cruz, CA 95060  
 (831) 454-2160

Presort Standard  
 U.S. Postage  
**PAID**  
 Complete Mailing  
 Service, Inc.



Printed on 55% recycled 30% post-consumer waste paper processed chlorine-free, using soy-based inks.

## RECYCLING RESOURCES



**Recycle Information Line** ..... 831-454-2333

- What and where to recycle (recorded messages)

**Curbside Refuse, Recycling and Yard Waste Collection** ..... 800-665-2209

(operated by GreenWaste Recovery)  
[www.greenwaste.com/santa-cruz-county](http://www.greenwaste.com/santa-cruz-county)

- Begin new service
- Report missed recycling or trash service
- Request delivery or removal of carts
- Obtain oil recycling jugs



**County Community Development and Infrastructure** ..... 831-454-2160

[www.santacruzcountyrecycles.org](http://www.santacruzcountyrecycles.org)

- Apartments and business recycling inquiries
- Complaints, compliments or suggestions
- Report roadside trash ..... 831-477-3999
- Download and use the "My Santa Cruz County" free mobile app

**Household Hazardous Waste** ..... 831-454-2606  
 (recorded messages)

- Schedule for free disposal
- Non-hazardous alternatives



**Contact Zero Waste Outreach Team** ..... 831 454-2160

- or [ZeroWaste@santacruzcounty.us](mailto:ZeroWaste@santacruzcounty.us)
- Questions
- Volunteer as a Zero Waste champion



**Composting Resources** ..... [www.compostsantacruzcounty.org](http://www.compostsantacruzcounty.org)

**Buena Vista Landfill & Recycling Center** ..... 831-454-5153

- Recorded information ..... 831-454-2430
- 1231 Buena Vista Drive, Watsonville 95076
- Open Mon-Sat 7:30-3:30
- HHW Facility - Open Wed, Fri & Sat 7:30-3:30

**Ben Lomond Transfer Station & Recycling Center** ..... 831-336-3951

- Recorded information ..... 831-454-2430
- 9835 Newell Creek Road, Ben Lomond 95005
- Open Mon-Sat 7:30-3:30
- HHW Facility - Open Thursdays 7:30-3:30

**California Grey Bears Recycling Centers** ..... 831-479-1055 ext. 235

- Mid County, 2710 Chanticleer Avenue, Santa Cruz 95065
- Open 7:30-3:45 daily
- CRV Redemption - Open Mon-Sat 10:00-3:00
- Buena Vista Landfill - Open Mon-Sat 7:30-3:30
- Ben Lomond Transfer Station - Open Mon-Sat 7:30-3:30



**City of Santa Cruz Resource Recovery Facility & Recycling Center** ..... 831-420-6270

- Open to unincorporated county residents in Davenport and Bonny Doon only
- 605 Dimeo Lane, Santa Cruz 95060
- Open Mon-Sat 7:30-3:30
- HHW Facility - Currently closed for remodel. Info at: <https://www.cityofsantacruz.com/government/city-departments/public-works/resource-recovery-garbage-recycling-sweeping/hazardous-waste>



**Para información en español sobre el reciclaje en las áreas no incorporadas del condado de Santa Cruz, favor de llamar al (800) 665-2209.**